

Score

# You'd Be So Nice to Come Home To

Art Pepper Meets the Rhythm Section

BASS / Paul Chambers

Gm7

Am7(b5) D7(b9)

Gm7

D7(b9)

Gm7



Cm7

Bdim

Bb7

EbΔ7

5



Am7(b5)

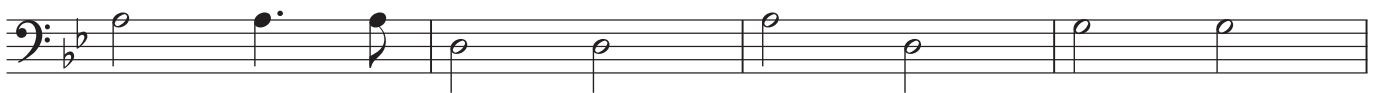
D7

Am7(b5)

D7(b9)

Gm7

9



C9(13)

Bbm7

Am7(b5)

D7(b9)

13



Gm7

Am7(b5)

D7(b9)

Gm7

D7(b9)

Gm7

17



Fm7

Bb7

EbΔ7

21



Dbdim

Bb

F#dim7

Gm7

25



C7

F7

Bb6

Am7(b5)

D7(b9)

29



33 Gm7 Am7(b5) D7(b9) Gm7 D7(b9) Gm7

37 Cm7 Bb7 EbΔ7

41 Fm7 D7 Gm7

45 C9 C7(b9) Am7(b5) D7(b9)

49 Gm7 Am7(b5) D7(b9) Gm7 D7(b9) Gm7

53 Fm7 Bb7 EbΔ7

57 Edim7 Bb F#dim7 Gm7

61 C7 F7 Bb6 Am7(b5) D7(b9)