

Score

Caravan

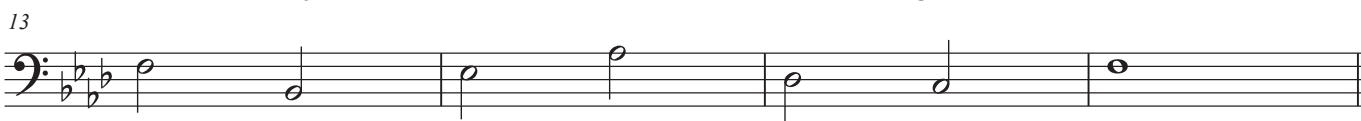
Jazz Poet - Tommy Flanagan

George Mraz - Bass

C7(b9)



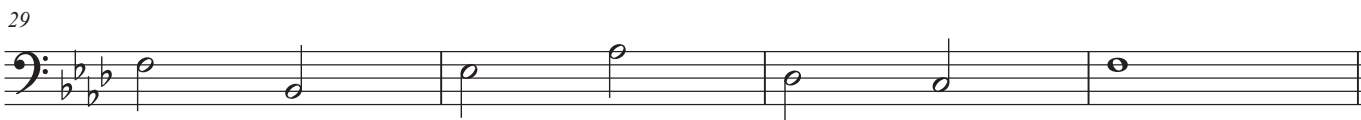
Fm7 Bb9 Eb Ab Db Cm7 Fm7



C7(b9)



Fm7 Bb9 Eb Ab Db Cm7 Fm7



F7

33



B \flat 7

37



E \flat 7

41



A \flat 6

G7

D \flat 7

45



C7(\flat 9)

49



53



57



Fm7

B \flat 9

E \flat

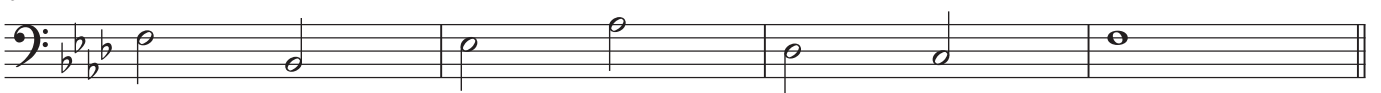
A \flat

D \flat

Cm7

Fm7

61



C7(b9)

65

Measures 65-68: Bass clef, key signature of three flats (B-flat, E-flat, A-flat). Measure 65: G2, A2, B2, C3, D3, E3, F3, G3. Measure 66: G2, A2, B2, C3, D3, E3, F3, G3. Measure 67: G2, A2, B2, C3, D3, E3, F3, G3. Measure 68: G2, A2, B2, C3, D3, E3, F3, G3.

69

Measures 69-72: Bass clef, key signature of three flats. Measure 69: G2, A2, B2, C3, D3, E3, F3, G3. Measure 70: G2, A2, B2, C3, D3, E3, F3, G3. Measure 71: G2, A2, B2, C3, D3, E3, F3, G3. Measure 72: G2, A2, B2, C3, D3, E3, F3, G3.

73

Measures 73-76: Bass clef, key signature of three flats. Measure 73: G2, A2, B2, C3, D3, E3, F3, G3. Measure 74: G2, A2, B2, C3, D3, E3, F3, G3. Measure 75: G2, A2, B2, C3, D3, E3, F3, G3. Measure 76: G2, A2, B2, C3, D3, E3, F3, G3.

Fm

77

Measures 77-80: Bass clef, key signature of three flats. Measure 77: G2, A2, B2, C3, D3, E3, F3, G3. Measure 78: G2, A2, B2, C3, D3, E3, F3, G3. Measure 79: G2, A2, B2, C3, D3, E3, F3, G3. Measure 80: G2, A2, B2, C3, D3, E3, F3, G3.

C7(b9)

81

Measures 81-84: Bass clef, key signature of three flats. Measure 81: G2, A2, B2, C3, D3, E3, F3, G3. Measure 82: G2, A2, B2, C3, D3, E3, F3, G3. Measure 83: G2, A2, B2, C3, D3, E3, F3, G3. Measure 84: G2, A2, B2, C3, D3, E3, F3, G3.

85

Measures 85-88: Bass clef, key signature of three flats. Measure 85: G2, A2, B2, C3, D3, E3, F3, G3. Measure 86: G2, A2, B2, C3, D3, E3, F3, G3. Measure 87: G2, A2, B2, C3, D3, E3, F3, G3. Measure 88: G2, A2, B2, C3, D3, E3, F3, G3.

89

Measures 89-92: Bass clef, key signature of three flats. Measure 89: G2, A2, B2, C3, D3, E3, F3, G3. Measure 90: G2, A2, B2, C3, D3, E3, F3, G3. Measure 91: G2, A2, B2, C3, D3, E3, F3, G3. Measure 92: G2, A2, B2, C3, D3, E3, F3, G3.

Fm

93

Measures 93-96: Bass clef, key signature of three flats. Measure 93: G2, A2, B2, C3, D3, E3, F3, G3. Measure 94: G2, A2, B2, C3, D3, E3, F3, G3. Measure 95: G2, A2, B2, C3, D3, E3, F3, G3. Measure 96: G2, A2, B2, C3, D3, E3, F3, G3.

F7

97

B^b7

101

E^b7

105

A^b6

G7

D^b7

109

C7(^b9)

113

117

121

Fm

125